



OUR NAME. OUR REPUTATION. O'MARA.

PI SERIES PAN IDLER BELT CONVEYORS

Stationary pan idler belt conveyors are the ideal choice for handling all types of bulk materials at inclines up to 30 degrees. In addition to small free flowing bulk products such as seed, grain, and feed, larger bulk products including ear corn, husks, silage, and cobs may also be transferred, as they are contained by the conveyor's sidewalls.



- ✓ Numerous designs, lengths, and sidewall heights are available to meet the project scope.
- ✓ Belt widths available in 12", 18", 24", 30", 36", 42", and 54" with stainless steel belt lacing.
- ✓ Gear reduction drives sized and specified per application.
- ✓ Push-style, guarded screw take-ups standard.
- ✓ 1.9" dia. Galvanized load and return rollers.
- ✓ Formed and welded 12 gauge frames.
- ✓ Standard 7 gauge drive and take-up terminals.
- ✓ Standard powder coat finish, your choice of color.

STANDARD FEATURES

- ✓ **CONVEYOR FRAMES:** Drive and take-up terminals fabricated from 7 gauge sheet steel, intermediate sections are 12 gauge sheet steel. Welded construction with 30° trough angle and 1.9" diameter galvanized load idlers spaced 12" O.C. and 1.9" diameter galvanized return idlers spaced 60" O.C. All load and return idlers are double punched for ideal belt tracking. All bottom flanges are turned in at 45° and all spreader angles are inverted so as not to create any ledges that may catch product.
- ✓ **BELTING TYPES:** Minimum PVC 150#. Smooth top, crescent top, rough-top, and cleat-top belts are available depending on the application with stainless steel mechanical belt lacing.
- ✓ **POWER/DRIVES:** 208-230/460 3 phase and 230 volt single phase TEFC motors. Explosion proof, wash down, and corrosion resistant available upon request. Gear reduction shaft mounted, right angle, and right angle/chain final drives are available.



O'MARA AG & EQUIPMENT SERVICES

1626 Delaware Ave.
Des Moines, IA 50317
(515) 989-2094

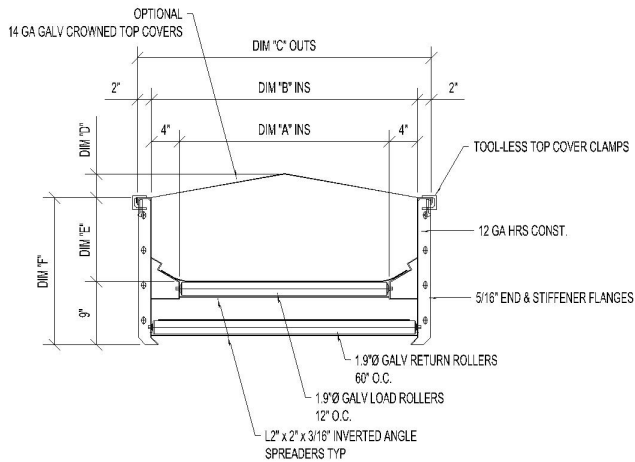
WWW.OMARA-AG.COM
INFO@OMARA-AG.COM



OUR NAME. OUR REPUTATION. O'MARA.

PRODUCT INCLUDES (CONTINUED)

- ✓ **PULLEYS:** Crowned and vulcanized, rough top lagged head pulleys are standard in 6", 8", 10, 12", 16", 18", and 24" diameters, depending on overall length of the conveyor. Crowned take-up pulleys are 6", 8", or 12" diameter. Standard snub rollers are 6" diameter.
- ✓ **GUARDING:** Every conveyor is shipped with all of its moving parts guarded, take-ups, and drives as an integrated standard feature, not as an add-on.



PAN IDLER (PI) 100 SERIES STANDARD CROSS SECTION												
BELT WIDTH	DIM "A"	DIM "B"	DIM "C"	DIM "D"	PI-6		PI-9		PI-12		PI-18	
					DIM "E"	DIM "F"	DIM "E"	DIM "F"	DIM "E"	DIM "F"	DIM "E"	DIM "F"
12"	6"	14"	18"	1.5/16"	6"	15"	9"	18"	12"	21"	18"	27"
18"	12"	20"	24"	1.3/4"	6"	15"	9"	18"	12"	21"	18"	27"
24"	18"	26"	30"	2.5/16"	6"	15"	9"	18"	12"	21"	18"	27"
30"	24"	32"	36"	2.13/16"	6"	15"	9"	18"	12"	21"	18"	27"
36"	30"	38"	42"	3.3/8"	6"	15"	9"	18"	12"	21"	18"	27"
42"	36"	44"	48"	3.7/8"	6"	15"	9"	18"	12"	21"	18"	27"
48"	42"	50"	54"	4.7/16"	6"	15"	9"	18"	12"	21"	18"	27"
54"	48"	56"	60"	4.15/16"	6"	15"	9"	18"	12"	21"	18"	27"

ADDITIONAL FEATURES

- ✓ Galvanized hip-roof top weather covers.
- ✓ Formed mild steel or expanded metal, hinged bottom covers.
- ✓ Discharge chutes, lined and un-lined.
- ✓ Belt skirting: Rubber, metal, or combination or both.
- ✓ Reversing center drives.
- ✓ Both under-slung and over-slung/horizontal gravity take-ups.
- ✓ Belt loaders, inlet boxes, and receiving hoppers.
- ✓ Inside radius and outside radius bend wedges.
- ✓ Structural supports and indexing frames with drives.
- ✓ Stainless steel construction.



O'MARA AG & EQUIPMENT SERVICES

1626 Delaware Ave.
Des Moines, IA 50317
(515) 989-2094

WWW.OMARA-AG.COM
INFO@OMARA-AG.COM



OUR NAME. OUR REPUTATION. O'MARA.

TR SERIES TRI-ROLLER BELT CONVEYORS

Stationary roller bed belt conveyors are the ideal choice for handling all types of bulk materials at inclines up to 30 degrees. In addition to small free flowing bulk products such as seed, grain, and feed, larger bulk products including ear corn, husks, silage, or waste materials may also be transferred.



FEATURES AND OPTIONS

- ✓ Numerous designs and lengths available to meet the project scope.
- ✓ Belt widths available in 18", 20", 24", 30", 36", and 42" with stainless steel belt lacing.
- ✓ Gear reduction drives sized and specified per application.
- ✓ Push-style, guarded screw take-ups standard.
- ✓ 1.9" dia. Galvanized load and return rollers.
- ✓ Formed and welded 12 gauge frames.
- ✓ Standard 7 gauge drive and take-up terminals.
- ✓ Standard powder coat finish, your choice of color.

STANDARD FEATURES

- ✓ **CONVEYOR FRAMES:** Drive and take-up terminals fabricated from 7 gauge sheet steel, intermediate sections are 12 gauge sheet steel. Welded construction with 30° idler angle and 1.9" diameter galvanized trough and return idlers. Idler stations spaced 30" O.C. with outside idlers adjustable for training belt. Return idlers spaced 60" O.C. All return idlers are double punched for ideal belt tracking. All bottom flanges are turned in at 45° and all spreader angles are inverted so as not to create any ledges that may catch product.
- ✓ **BELTING TYPES:** Minimum PVC 150#. Smooth top, crescent top, and rough top, belts are available depending on the application with stainless steel mechanical belt lacing.



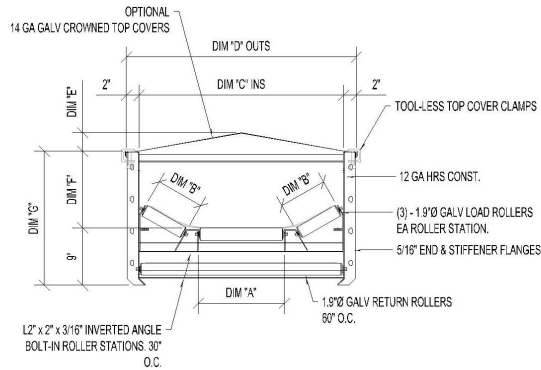
O'MARA AG & EQUIPMENT SERVICES

1626 Delaware Ave.
Des Moines, IA 50317
(515) 989-2094

WWW.OMARA-AG.COM
INFO@OMARA-AG.COM



OUR NAME. OUR REPUTATION. O'MARA.



STANDARD FEATURES (CONTINUED)

- ✓ **POWER/DRIVES:** 208-230/460 3 phase and 230 volt single phase TEFC motors. Explosion proof, wash down, and corrosion resistant available upon request. Gear reduction shaft mounted, right angle, and right angle/chain final drives are available.
- ✓ **PULLEYS:** Crowned and vulcanized, rough top lagged head pulleys are standard in 6", 8", 10, 12", 16", 18", and 24" diameters, depending on overall length of the conveyor. Crowned take-up pulleys are 6" or 8" diameter. Standard snub rollers are 6" diameter.
- ✓ **GUARDING:** Every conveyor is shipped with all of its moving parts guarded, including, pulleys, bearings, shafts, take-ups, and drives as an integrated standard feature, not as an add-on.

TRI-ROLLER (TR) SERIES STANDARD PROFILE										
BELT WIDTH	DIM "A"	DIM "B"	DIM "C"	DIM "D"	DIM "E"	TR-06		TR-09		TR-12
						DIM "F"	DIM "G"	DIM "F"	DIM "G"	
18" *	N/A	9"	20"	24"	1.3/4"	6"	15"	9"	18"	21"
20" **	N/A	10"	22"	26"	2"	6"	15"	9"	18"	21"
24"	7.1/2"	7.1/2"	26"	30"	2.5/16"	6"	15"	9"	18"	21"
30"	13.1/2"	7.1/2"	32"	36"	2.13/16"	6"	15"	9"	18"	21"
36"	19.1/2"	7.1/2"	38"	42"	3.3/8"	6"	15"	9"	18"	21"
42"	26"	7.1/2"	44"	48"	3.7/8"	6"	15"	9"	18"	21"

* Dual-Roll configuration for 18" belt width conveyor.

** Dual-Roll configuration for 20" belt width conveyor.

AVAILABLE OPTIONS

- ✓ Galvanized hip-roof top weather covers.
- ✓ Formed mild steel or expanded metal, hinged bottom covers.
- ✓ Discharge chutes, lined and un-lined.
- ✓ Belt skirting: Rubber, metal, or combination or both.
- ✓ Reversing center drives.
- ✓ Both under-slung and over-slung/ horizontal gravity take-ups.
- ✓ Belt loaders, inlet boxes, and receiving hoppers.
- ✓ Inside radius and outside radius bend wedges.
- ✓ Structural supports and truss frame designs.
- ✓ Stainless steel construction.
- ✓ Gravity or shuttle conveyor motorized trippers.
- ✓ Belt misalignment and belt speed sensors.
- ✓ Training idlers to aid in belt tracking.
- ✓ Additional bolt-in roller stations for load points.



O'MARA AG & EQUIPMENT SERVICES

1626 Delaware Ave.
Des Moines, IA 50317
(515) 989-2094

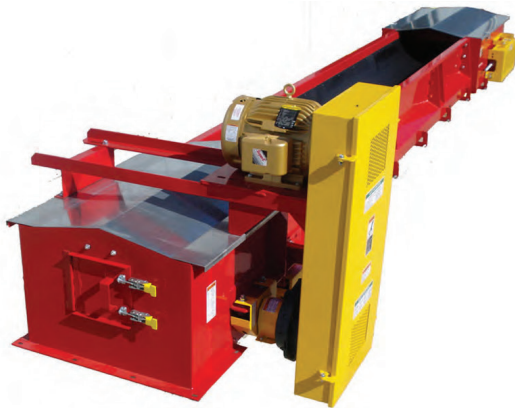
WWW.OMARA-AG.COM
INFO@OMARA-AG.COM



OUR NAME. OUR REPUTATION. O'MARA.

RB SERIES HALF-TUBE BELT CONVEYORS

Stationary enclosed round bottom, half tube belt conveyors for transfer of bulk materials at inclines up to 30 degrees. Specifically designed to convey small, free flowing materials such as seed, grain, or feed where the round bottom trough design contains the product and helps to prevent leakage.



- ✓ Numerous designs, lengths, available to meet the project scope.
- ✓ Belt widths available in 8", 10", 12", 16", 20", and 26" with stainless steel belt lacing.
- ✓ Gear reduction drives sized and specified per application.
- ✓ Push-style, guarded screw take-ups standard.
- ✓ 1.9" dia. Galvanized return rollers.
- ✓ Formed and welded 12 gauge frames.
- ✓ Standard 10 gauge drive and take-up terminals.
- ✓ Standard powder coat finish, your choice of color.

STANDARD FEATURES

- ✓ **CONVEYOR FRAMES:** Enclosed frame design with drive and take-up terminals fabricated from 10 gauge sheet steel, intermediate sections are 12 gauge sheet steel. Welded construction with formed radius, round bottom trough and 1.9" diameter galvanized return idlers spaced 60" O.C. All return idlers are double punched for ideal belt tracking. All bottom flanges are turned in at 45° and all spreader angles are inverted so as not to create any ledges that may catch product.
- ✓ **BELTING TYPES:** Minimum PVC 150#. Smooth top, crescent top, rough top, and pattern top belts are available depending on the application with stainless steel mechanical belt lacing.
- ✓ **POWER/DRIVES:** 208-230/460 3 phase and 230 volt single phase TEFC motors. Explosion proof, wash down, and corrosion resistant available upon request. Gear reduction shaft mounted, right angle, and right angle/chain final drives are available.



O'MARA AG & EQUIPMENT SERVICES

1626 Delaware Ave.
Des Moines, IA 50317
(515) 989-2094

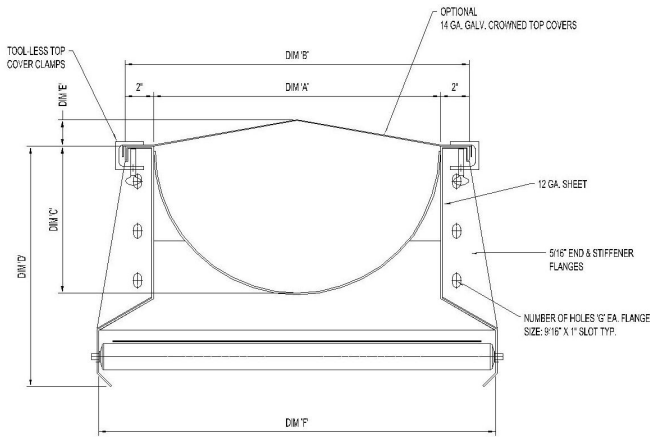
WWW.OMARA-AG.COM
INFO@OMARA-AG.COM



OUR NAME. OUR REPUTATION. O'MARA.

STANDARD FEATURES (CONTINUED)

- ✓ **PULLEYS:** Crowned and vulcanized, rough top lagged head pulleys are standard in 8", 10", 12", and 16" diameters, depending on overall length of the conveyor. Crowned take-up pulleys are 6" or 8" diameters. Standard snub rollers are 4" diameter.
- ✓ **GUARDING:** Every conveyor is shipped with all of its moving parts guarded, take-ups, and drives as an integrated standard feature, not as an add-on.



ADDITIONAL OPTIONS

- ✓ Galvanized hip-roof top weather covers.
- ✓ Formed mild steel or expanded metal, hinged bottom covers.
- ✓ Discharge chutes, lined and un-lined.
- ✓ Belt skirting: Rubber, metal, or combination or both.
- ✓ Reversing center drives.
- ✓ Belt loaders, inlet boxes, and receiving hoppers.
- ✓ Structural supports.
- ✓ Anti static black UHMW trough wear liners.
- ✓ Stainless steel construction.

BELT WIDTH	DIM 'A'	DIM 'B'	DIM 'C'	DIM 'D'	DIM 'E'	DIM 'F'	# HOLES 'G'
8"	6-1/4"	10-1/4"	3-1/2"	9-1/2"	1/2"	10"	1
10"	8-1/4"	12-1/4"	4-1/4"	10"	3/4"	12"	1
12"	10-1/4"	14-1/4"	5-1/2"	11-1/2"	1"	11-1/2"	2
16"	14-1/4"	18-1/4"	7-1/4"	13"	1-1/4"	13"	2
20"	16-1/4"	20-1/4"	9"	15-1/4"	1-7/16"	22"	2
26"	20-1/4"	24-1/4"	10-3/8"	17-1/4"	1-13/16"	28"	3



O'MARA AG & EQUIPMENT SERVICES

1626 Delaware Ave.
Des Moines, IA 50317
(515) 989-2094

WWW.OMARA-AG.COM
INFO@OMARA-AG.COM



OUR NAME. OUR REPUTATION. O'MARA.

CONVEYOR BELT TRIPPERS

Available as gravity flow style or cross conveyor style, these motorized trippers are used for filling multiple bins or discharging materials all along a conveyor's length. In addition to small free flowing bulk products such as seed, grain, and feed, larger bulk products including ear corn, husks, silage, or waste materials may also be transferred.



- ✓ Both gravity flow and cross conveyor designs are available to meet specific project requirements.
- ✓ Available for 18", 24", 30", 36", 42", and 48" belt widths.
- ✓ Shipped complete with limited field assembly required.
- ✓ Shaft sizes, pulley sizes, and horsepower engineered per application.
- ✓ Bearings and pulleys fully guarded to meet safety restrictions.
- ✓ Standard 10 gauge formed and welded shuttle conveyor frames with 4 x 8 tubular steel indexing carriage.
- ✓ Standard powder coat finish, your choice of color.

GRAVITY FLOW TRIPPER WITH SIDE CHUTE Motorized tripper cart with single side chute for discharge off of one side only.



TRIPPER WITH INDEXING SHUTTLE CROSS CONVEYOR Tri-Roller design with motorized ear corn letdown assembly.



O'MARA AG & EQUIPMENT SERVICES

1626 Delaware Ave.
Des Moines, IA 50317
(515) 989-2094

WWW.OMARA-AG.COM
INFO@OMARA-AG.COM



OUR NAME. OUR REPUTATION. O'MARA.

TRIPPER STANDARD FEATURES

- ✓ Modular design shipped with limited field assembly required for drop-in, bolt-in-place field installation.
- ✓ Both twin and tri-roller (TR) designs.
- ✓ May be fitted to any new or existing O'Mara conveyor and may also be fitted to other brands of new or existing conveyors.
- ✓ Standard crowned bend pulleys for easy belt tracking.
- ✓ Minimum 1.15/16" diameter shaft sizes, up to 2.7/16" diameter, depending on conveyor length and belt tension.
- ✓ Tripper cart frames fabricated from 3 x 3 tubular steel.
- ✓ Shuttle cross conveyors 10 gauge sheet steel with robust 4 x 8 tubular steel indexing frames.
- ✓ Standard 4wd motorized tripper cart drive with dual matched brake motors and right angle gear reducers.
- ✓ Stationary center drive for shuttle conveyor to limit weight transfer.
- ✓ Bearings, shafts, pulleys, and pinch points all guarded as standard feature to meet your safety requirements.



IN-LINE BELT TRIPPER Stationary in-line belt tripper for horizontal to incline conveyor changes where space for typical outside arc conveyor wedges is not available.

AVAILABLE OPTIONS

- ✓ Motorized indexing and reversing shuttle cross conveyor.
- ✓ Side discharge chutes for discharge off one or both sides of tripper.
- ✓ UHMW and Rhino Hyde lined discharge chutes.
- ✓ Cross-over platform with stairs, ladders or both and operator's deck available.
- ✓ Motorized ear corn belt letdown assemblies available for cushioned seed dryer fill.
- ✓ Belt misalignment and belt speed sensors.
- ✓ Outriggers with v-groove or smooth wheels.
- ✓ Stainless steel or galvanized construction.



O'MARA AG & EQUIPMENT SERVICES

1626 Delaware Ave.
Des Moines, IA 50317
(515) 989-2094

WWW.OMARA-AG.COM
INFO@OMARA-AG.COM



OUR NAME. OUR REPUTATION. O'MARA.

GTU SERIES GRAVITY TAKE-UP ASSEMBLIES

Gravity take-up assemblies are typically required on conveyors exceeding 220'-0" in overall length where excessive belt stretch or additional belt tension may be required.



- ✓ Both under-slung and over-slung/horizontal designs are available to meet specific project requirements.
- ✓ Available for 18", 20", 24", 30", 36", 42", 48", and 54" belt widths.
- ✓ Bolt-in-place, under-slung and over-slung take-ups are shipped as either a complete 10'-0" mid section (underslung), for drop-in, modular assembly or shipped as a complete take-up terminal (over-slung) to be assembled in place of the standard take-up terminal.
- ✓ Shaft sizes, pulley sizes, and weight box capacity engineered per application.
- ✓ Bearings and pulleys fully guarded to meet safety restrictions.
- ✓ Standard 7 and 10 gauge formed and welded frames, reinforced with formed structural angles and/or square tubing.
- ✓ Standard powder coat finish, your choice of color.



O'MARA AG & EQUIPMENT SERVICES

1626 Delaware Ave.
Des Moines, IA 50317
(515) 989-2094

WWW.OMARA-AG.COM
INFO@OMARA-AG.COM



OUR NAME. OUR REPUTATION. O'MARA.



PACKAGED FOR SHIPMENT All units ship fully assembled and skidded for protection as shown.



GRAVITY TAKE-UP STANDARD FEATURES

- ✓ Modular one piece design shipped fully assembled for drop-in, bolt-in-place field installation.
- ✓ Both pan idler (PI) and tri-roller (TR) designs.
- ✓ May be fitted to any new or existing O'Mara conveyor and may also be fitted to other brands of new or existing conveyors.
- ✓ Standard 12" diameter crowned take-up pulley.
- ✓ Standard 8" diameter bend pulleys.
- ✓ Minimum 1.15/16" diameter shaft sizes, up to 2.7/16" diameter, depending on conveyor length and belt tension.
- ✓ GTU pendulum frames fabricated from formed structural angles and/or square tubing.
- ✓ Weight boxes fabricated from 10 gauge sheet steel, and reinforced with 2" square tube.
- ✓ 1.7/16" pillow block bearings for pendulum pivot.
- ✓ HD chain installed to limit over-travel and as a safety precaution in case of belt breakage or failure.
- ✓ Bearings, shafts, pulleys, and pinch points all guarded as standard feature to meet your safety requirements.

AVAILABLE OPTIONS

- ✓ Larger weight box capacities for longer conveyor lengths.
- ✓ Custom pivot point location to meet installation requirements.
- ✓ Full belt enclosure with locking access doors for inspection and belt tracking.



O'MARA AG & EQUIPMENT SERVICES

1626 Delaware Ave.
Des Moines, IA 50317
(515) 989-2094

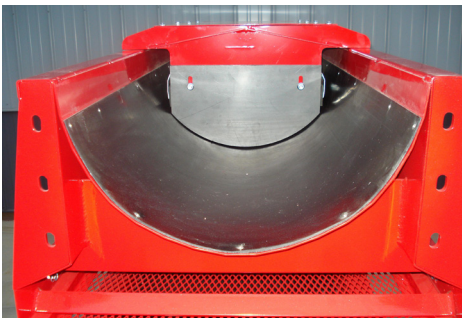
WWW.OMARA-AG.COM
INFO@OMARA-AG.COM



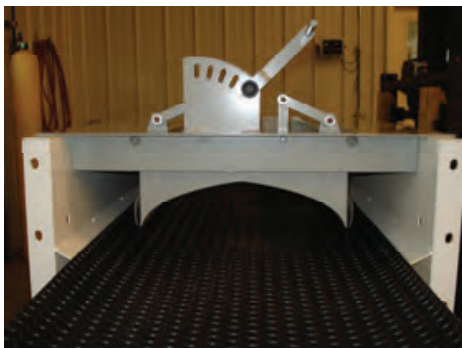
OUR NAME. OUR REPUTATION. O'MARA.

BL SERIES CONVEYOR BELT LOADERS

Belt loaders are the preferred way to load a conveyor belt properly, thus eliminating leakage or spillage associated with loading the belt too close to its edges. In addition to small free flowing products such as seed, grain, and feed, larger bulk products including ear corn, husks, silage, and cobs are all better introduced to the belt via a belt loader.



- ✓ Type "A" stationary - fixed, Type "B" stationary - fixed - flow-thru, and Type "Y" Bombay retractable bypass belt loader designs are available to meet specific project requirements.
- ✓ Available for 12", 16", 18", 20", 24", 26", 30", 36", 42", 48", and 54 belt widths.
- ✓ Drop-in-place belt loaders are shipped fully assembled and ready to be inserted any place along a conveyor's length.
- ✓ Removable flat-top design for easy, field cut inlets into loader box.
- ✓ Standard 12 gauge sheet steel construction.
- ✓ Standard powder coat finish, your choice of color.



BOMBAY RETRACTABLE BYPASS BELT LOADER

Shown in Down or Load position, left, and in Up or Bypass position, right. Manual controls shown above. Automated controls available upon request. Bombay loaders may also be opened partially to help meter or blend product.



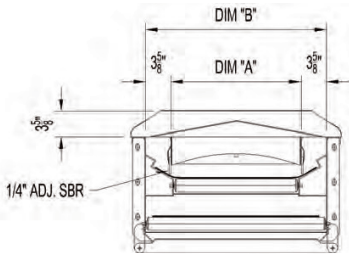
O'MARA AG & EQUIPMENT SERVICES

1626 Delaware Ave.
Des Moines, IA 50317
(515) 989-2094

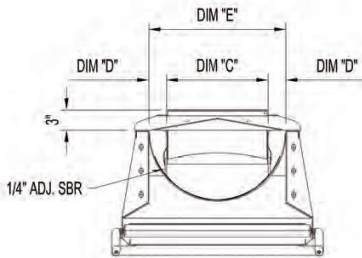
WWW.OMARA-AG.COM
INFO@OMARA-AG.COM



OUR NAME. OUR REPUTATION. O'MARA.



PI & TR BELT LOADERS		
BELT WIDTH	DIM "A"	DIM "B"
18"	12.3/4"	20"
24"	18.3/4"	26"
30"	24.3/4"	32"
36"	30.3/4"	38"
42"	36.3/4"	44"
48"	42.3/4"	50"



RB BELT LOADERS			
BELT WIDTH	DIM "C"	DIM "D"	TUBE DIM "E"
12"	5"	2.5/8"	10.1/4"
16"	8"	3.1/8"	14.1/4"
20"	11"	2.5/8"	16.1/4"
24"	15"	2.5/8"	20.1/4"
26"	15"	2.5/8"	20.1/4"

BELT LOADER STANDARD FEATURES

- ✓ Modular one piece design shipped fully assembled for drop-in, bolt-in-place field installation.
- ✓ 48" long standard length.
- ✓ Designed for pan idler (PI), tri-roller (TR), and round bottom (RB) conveyor profiles.
- ✓ Top weather cover overlap landing at each end for weather tight construction.
- ✓ 12 gauge sheet steel bolt-on, flat-top cover.
- ✓ Adjustable and replaceable 1/4" SBR side skirts.
- ✓ Sloped back with standard 1/4" SBR back-skirt to train product in direction of flow for Type "A" loader.

AVAILABLE OPTIONS

- ✓ Extended and reduced length units are available upon request.
- ✓ Access/Inspection door.
- ✓ UHMW belt and back-skirts in lieu of SBR material.
- ✓ Dust pickup collars.
- ✓ Manual, pneumatic, or electric actuated control of Bombay retractable loader.
- ✓ Manually indexed rolling belt loaders are available for bulk storage unload situations.
- ✓ Rhino Hyde spray-in and Rhino Hyde liners available.
- ✓ Sponge rubber gaskets for dust tight installation.
- ✓ Stainless steel construction.
- ✓ Manually adjustable flow control gate with tool free fasteners.



O'MARA AG & EQUIPMENT SERVICES

1626 Delaware Ave.
Des Moines, IA 50317
(515) 989-2094

WWW.OMARA-AG.COM
INFO@OMARA-AG.COM