

QUALITY SUPPORT FOR A CAREFREE HARVEST

QUALITY SUPPORT

Kincaid Equipment Mfg. prides itself on customer service. Kincaid Equipment's network of combine professionals is dedicated to providing the highest levels of support.

OPERATOR TRAINING

Kincaid Equipment has an enviable reputation for extensive and high-level training. We offer on-site training when your combine is delivered. This training encompasses all facets of machine operation, from basic machine maintenance to more complex electronic functions. This on-site training can make a tremendous difference in allowing you to get the most out of your investment. Ask your salesman for details.

HIGHLY TRAINED STAFF

Kincaid Equipment Mfg. has a well-qualified staff to give you support for all your sales and services needs. We stock a large supply of spare parts to help keep you in field-ready condition.

AFTER SALES SERVICE

Kincaid Equipment Mfg. is committed to exemplary customer service, both during harvest and out-of-season. We are equipped with special tools and diagnostic equipment, and our skilled technicians are dedicated to keeping your combine operating at peak levels of efficiency and reliability.

PARTS BACK-UP

Kincaid Equipment distributes a whole line of 8XP and other small seed plot combine parts, ensuring the same quality standards you have come to expect from our machines. With our emergency parts service we offer overnight delivery during harvest, a minimum amount of downtime is guaranteed. Kincaid Equipment Mfg. standard warranty terms apply. Please ask us for details.



210 W First Street, PO Box 400 Haven, KS 67543

1.800.465.7287 | sales@kincaidequipment.com | www.kincaidseedresearch.com



**8XP
COMBINE**

High Performance
Multi-Crop Plot Combine

THE BEST PLOT COMBINE IN ITS CLASS.

8XP COMBINE

The Kincaid 8XP is a Multi-Crop Research Plot Combine. This machine combines high capacity and rugged construction with excellent cleanout. It can be equipped with a 1.5, 2.0 or 2.3 meter grain table, 2-row all-crop head (sunflowers, sorghum, soybeans) or with a 2-row corn head. Other options include rape extension, pick-up attachments, sunflower pans, air delivery, air return, data collection, sample collection accessories and custom design. With over 300 of these machines being used in the U.S. and Canada since 1993 (in crops from Canola through Corn), this plot combine has a proven track record as the best plot combine in its class.

The standard 2 person factory cab is 85 cubic ft., pressurized, with 83 dba noise level. The design is unsurpassed in this class of machine. Spacious and comfortable, it's centrally mounted to give an excellent view of the table, as well as good all-around visibility for easy maneuvering in test plots. All major controls are positioned to the right, leaving the left hand free to steer the combine. The controls operate with ease and precision. Cylinder speed, concave clearance, table and reel adjustments can all be selected from the operator's seat. The 3-speed transmission gives control over power and speed with a hydrostatic drive that operates in all 3 gears.



TECHNICAL SPECS

Header

Basic cutting width	4.92 ft
Optional cutting width	6.5 ft / 7.5 ft
Cutting height	Hydraulic adjustment
Horizontal reel adjustment	Electrical
Grain conveyor	Tubular Chain Conveyor
Reel speed adjustment	Electrical

Threshing Drum

Diameter/Width	19.6 in / 30.7 in
Speed range (option)	400-1, 150rpm (300-700)
Speed adjustment	Electrical

Concave

Length	19.29 in
Angle of wrap	108°
Adjustment	Manual

Straw Walkers

Number of walkers	3 pcs.
Separation area	4.5 ft²

Cleaning

Top sieve	Adjustable
Area	2.3 ft²
Grain tank capacity	48 Bushels
Transport of grains	Tubular Grain Conveyor

Combine Drive Train

Engine	Tier 4 John Deere 107hp
Fuel tank capacity	37gal
Drive	3 Speed Hydrostatic
Drive speed	Infinitely variable, 12.4 mph
Tires, front	12.4 R 24
Tires, rear	11.5 - 15.3

Weight/Dimension

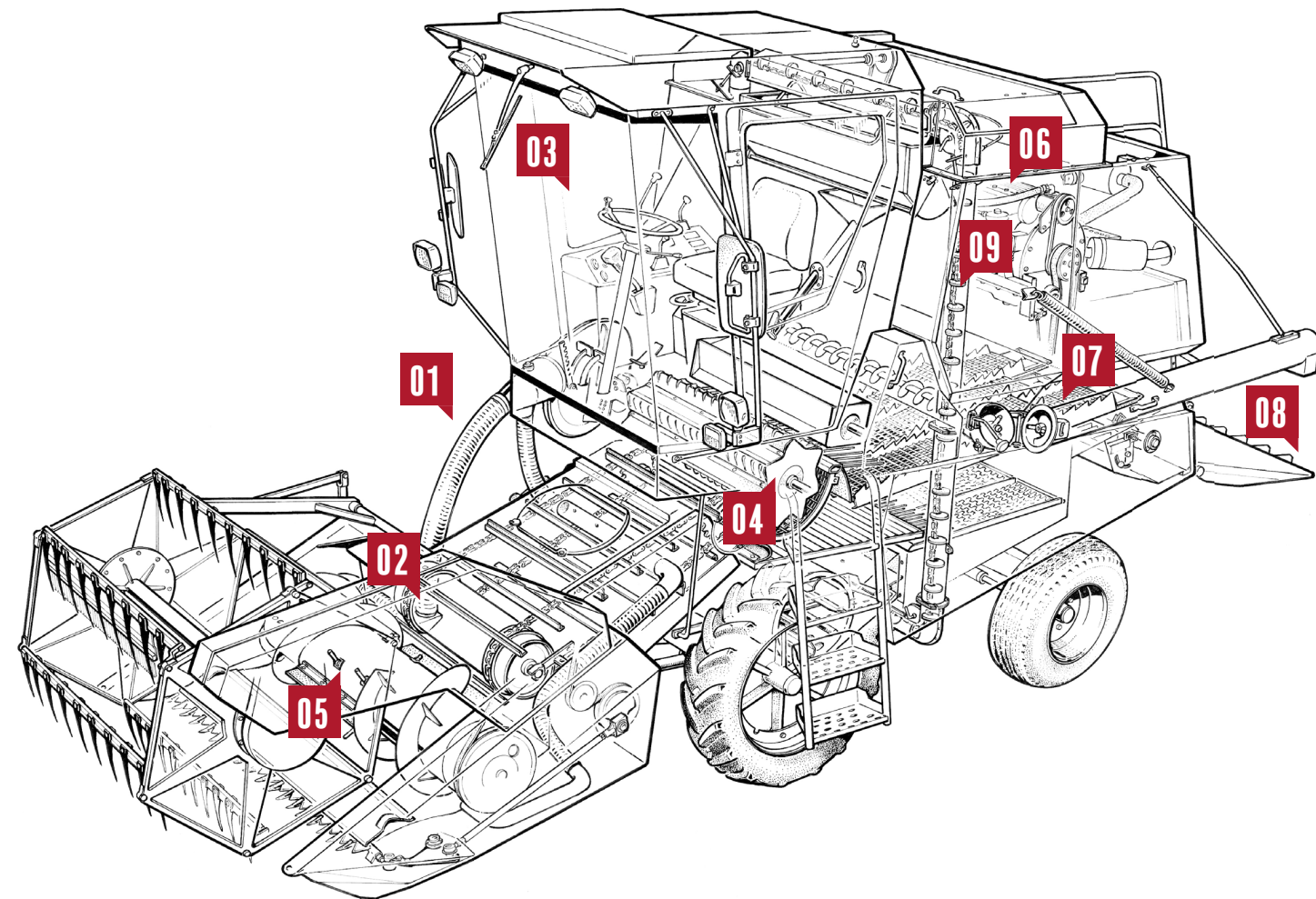
Weight with cab	8,500-11,000 lbs*
Overall length with header	21 ft
Overall width	8.2 ft
Height with cab	10.83 ft
Turning radius	11.48 ft

**Depending on options*

Accessories

Air conditioning, Bagging device, Four wheel drive, straw chopper, Bottom sieve: Interchangeable round hole sieve 0.47 m²





CLEAN & SIMPLE

The Kincaid 8XP combines have a reputation for being easy to clean. The grain tank discharge auger can be pulled out without tools. This makes cleaning a quick and effortless procedure.

The special made brushes on the pick-up reel combined with an effective airflow system results in supreme cleanliness throughout the whole threshing mechanism. Every detail has been taken into consideration in the design to provide uniform and reliable grain samples.

THE BLOWER

The blower is the core of the airflow cleaning system. The airflow is produced by a belt driven blower and positioned precisely at the cleaning points by means of a distribution system.

FEEDER ELEVATOR

The crop is evenly fed by the feeder elevator into the threshing drum. Two feeder chains support and stabilize the slats. The feeder elevator is thoroughly cleaned after every plot by the CHAC System.

THE CAB

The special made cab is wide and provides a convenient working environment for two operators. The cab is noise insulated and the windows are tinted glass. Air conditioning is available as an option.

THRESHING DRUM

The heavy duty closed threshing drum and large wrapping angles has been proven it's value in more than 4,000 plot combines. The electrically adjustable threshing drum is designed to outperform itself even in the hardest threshing conditions.

THE HEADER

The header is equipped with a continuous air flow blower to ensure clean and uniform crop samples. Available cutting widths are 1.50 m, 2.00 m, & 2.30 m.

ENGINE

The updated final Tier 4 John Deere 107hp engine is a reliable and economical power source for the combine. The service platform makes periods service functions safe and ergonomic. The combines are equipped with hydrostatic transmission. The 8XP can be equipped with four-wheel drive.

CLEANING SYSTEM

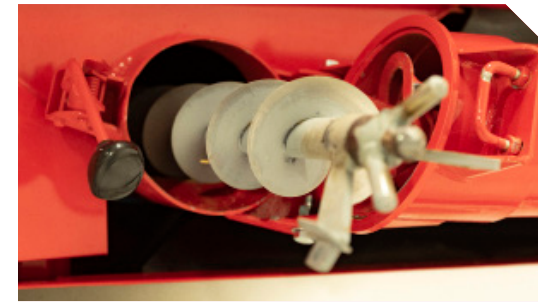
The Kincaid 8XP has 3 easily removable straw walkers mounted on lubricated for life bearings. For additional cleaning/separating, an optional double sieve system with rethresher can be fitted to the combine.

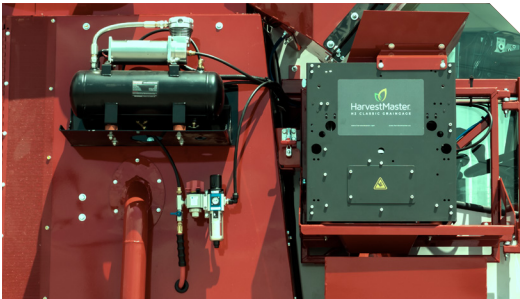
STRAW CHOPPER

The optional straw chopper features 14 sets of rotary knives & 27 stationary knives producing a fine cut and even distribution of many different types of straw. It is easily removable in case chopping isn't desired.

GRAIN ELEVATOR

The continuous loop clean grain elevator is precisely constructed to ensure near complete cleanout between plots. Tension and clearance are easily adjusted from ground level.





HARVEST MASTER HIGH CAPACITY GRAIN GAGE

The single plot H2 Grain Gage is specifically designed for single plot combines and can be used with a typical cyclone or gravity fed holding hopper. Based on the Twin Plot weight bucket design, the Single Plot bucket provides superior weight, moisture and test weight measurements without the maintenance found with traditional buckets.

Benefits

- HM800 electronics with CANBUS eliminates bulky cables
- Highly accurate & repeatable moisture and test weight measurement
- Weight measurement compensated for combine movement
- Harvest a wide variety of crops from corn to cereals
- Harvest strip trials without stopping the combine



MIRUS SOFTWARE & ALLEGRO FIELD PC

Designed with input from agriculture researchers, Mirus software is a powerful, modular, Windows Mobile package that provides data collection on research plots. Mirus software runs on a rugged handheld computer like the Allegro Field PC. The foundation of Mirus software is the Note Taking module. Note Taking is used along with the Harvest module to collect data on plots from a combine. Note Taking can also be used by the researcher to collect observations for other field applications.



CUSTOMIZABLE HEADERS/EQUIPMENT

The 8XP provides several special made headers and equipment for a wide range of crops. There are, for example, tables for corn, sunflower and special kits for rape, including table extensions and vertical knife.

ENGINE/TRANSMISSION

The updated final Tier 4 John Deere 107hp engine is a reliable and economical power source for the combine. The service platform makes periods service functions safe and ergonomic.

The Kincaid 8XP combines are equipped with hydrostatic transmission. The 8XP can be equipped with four-wheel drive.

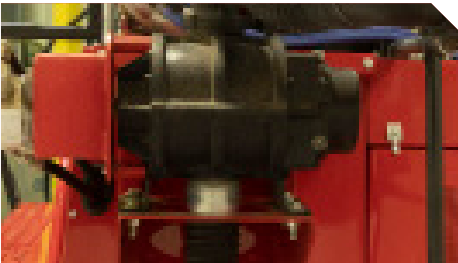
HEADER

The header cuts cleanly and evenly. The 8XP uses the CHAC System (Constant High Volume Air Stream Cleaning) to provide high cleanliness on the table to ensure clean samples.

The electrical and hydraulic adjustments conveniently operated from the cab make threshing versatile and accurate.

MF 8XP OPTIONS:-

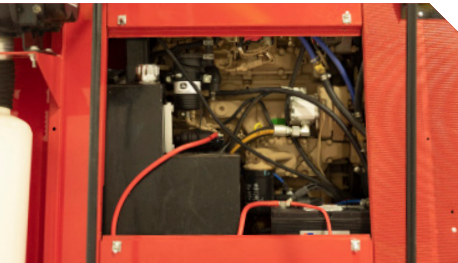
- Air Conditioner/Heater
- 1.5m, 2.0m, and 2.3m Auger Table with air cleanout and reverser
- 2-Row “Quick Attach” Corn Header
- Capello/Fantini 2 Row Crop Head Option
- Rape Attachment
- Pickup Attachment
- Electronic Options:
 - Weight only
 - Moisture/Weight
 - Moisture/Weight/Test Weight
- Grain Transfer to Operator (Sub or Entire)
- Air Grain Delivery
- 4 Wheel Drive Assist
- Straw Chopper
- Return System (Rethresher)
- Bagging Attachment Options:
 - Two 250lb Bag Bins/Door Modification
 - Four 100lb. Bag Holders
- Cylinder Slow Down Kit



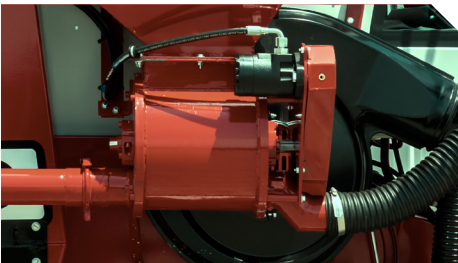
Positive Displacement Blower



Wheel Spec Modifications



Engine Pack



Weigh System/Air Lock



Wheel Spacing Options Available



Return System